

ARE YOU EXPERIENCING:

EROSION



Land area experiencing persistent soil erosion leading to sediment deposition in nearby lands/waterways. Visible evidence includes rills, gullies, and sediment deposits.

POOR VEGETATIVE COVER



Sparse or unhealthy vegetation that is insufficient to prevent erosion. Characterized by bare paths, stressed, diseased, or dead plants, or vegetative density is less than 75%.

EXCESS RUNOFF

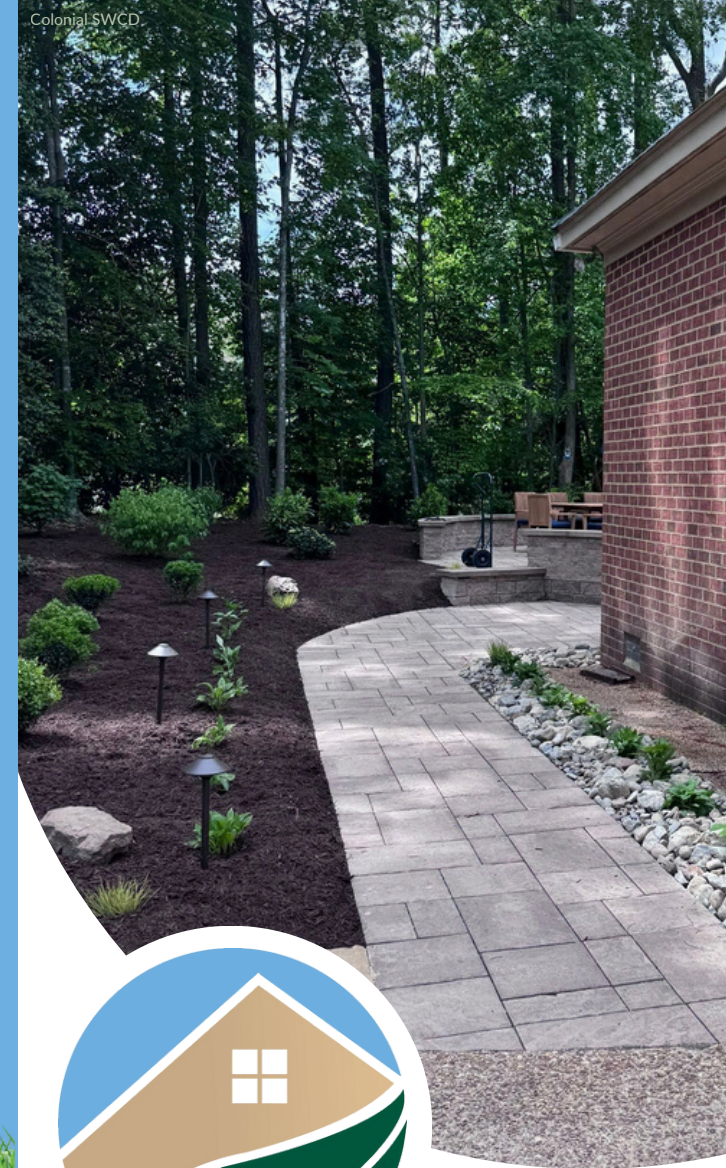


Land cover contributing to excess runoff refers to surfaces like impervious areas, compacted lawns, or poorly maintained lawns that increase speed and volume of runoff. It can also lead to concentrated or sheet flow, causing damage or pollution downstream.



WWW.VASWCD.ORG/VCAP

OUR PRACTICES ARE 4 THE SOIL!



Virginia Conservation Assistance Program

Presented by

Virginia Association of Soil & Water Conservation Districts

VCAP PROCESS



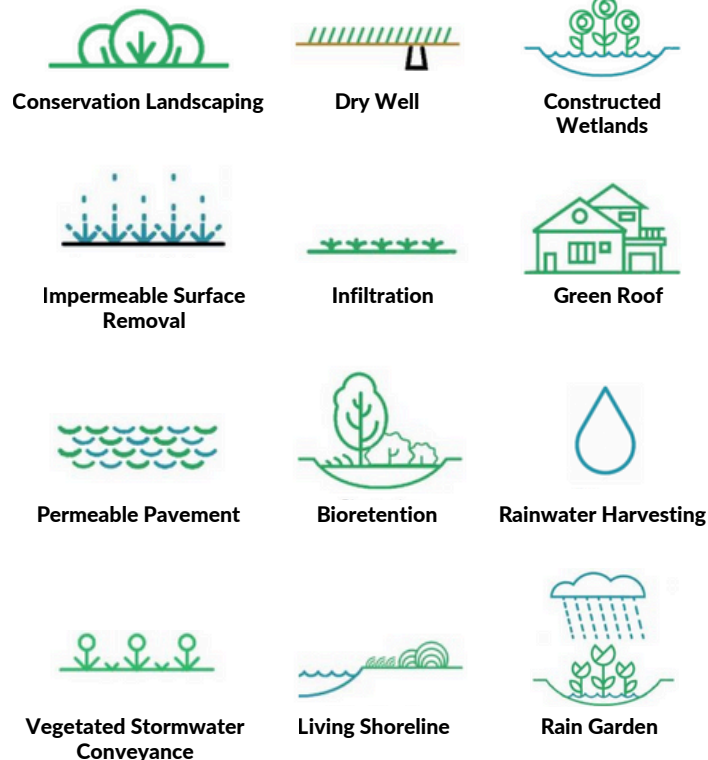
WHAT'S VCAP?

The Virginia Conservation Assistance Program (VCAP) provides financial, technical, and educational assistance to property owners installing eligible Best Management Practices (BMPs) in participating Soil & Water Conservation Districts (SWCDs).

VCAP BMPs not only help treat an identified and active resource concern on your property, but they also provide a range of ecological and community benefits. They reduce stormwater runoff, support biodiversity, help recharge groundwater, and provide educational opportunities.

**MOST PRACTICES ELIGIBLE
FOR UP TO 80% FINANCIAL
REIMBURSEMENT**

BEST MANAGEMENT PRACTICES:



- 1. CONNECT**
Reach out to your local SWCD to discuss interest and eligibility.
- 2. SITE ASSESSMENT**
SWCD staff visit the property to determine a resource concern and which practice is the best fit.
- 3. DESIGN PLAN**
Create a design plan that includes details on materials, installation, function, and maintenance.
- 4. APPLICATION REVIEW**
Application is reviewed by your local SWCD Board and the VCAP Steering Committee for approval.
- 5. INSTALLATION**
Installation must begin within 90 days of approval and be completed by June of the following calendar year.
- 6. PAYMENT REQUEST**
SWCD staff will verify the practice was installed as approved. Following approval, a check will be written for the approved amount.
- 7. MAINTENANCE**
All practices are required to be maintained through their lifespan, 5 or 10 years, and will be subject to spot check(s).