

Introduction to Dendrology

Ellen Powell
Virginia Dept. of Forestry

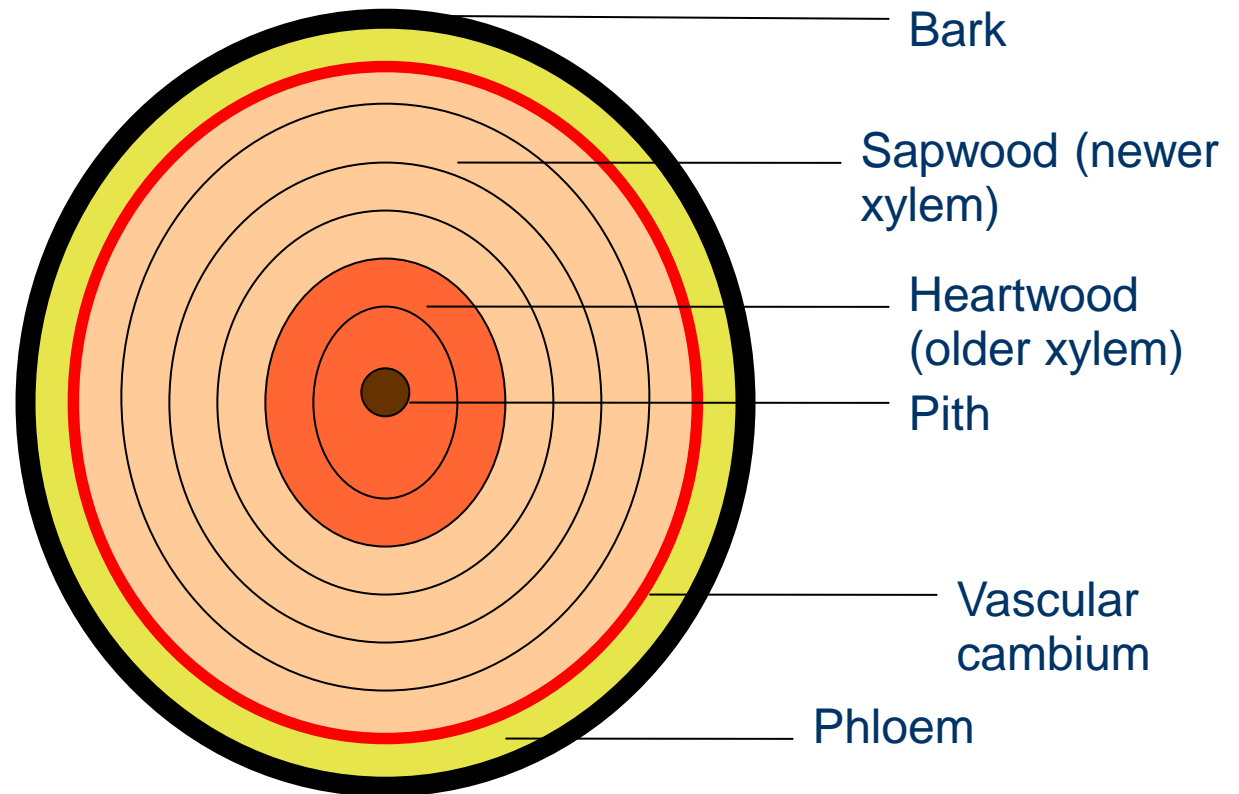


What is a tree?

- Woody plant
- Usually one main stem
- Exceeds 15 feet in height and 3 inches in diameter at maturity

Tree Trunk Anatomy

* Diagram
not to scale



Tree Growth



- Growth occurs only from meristem tissue (cambium, stem and root tips).
- Early (spring) wood is light and softer.
- Late (summer) wood is dark and denser.
- 1 light + 1 dark ring = 1 year's growth

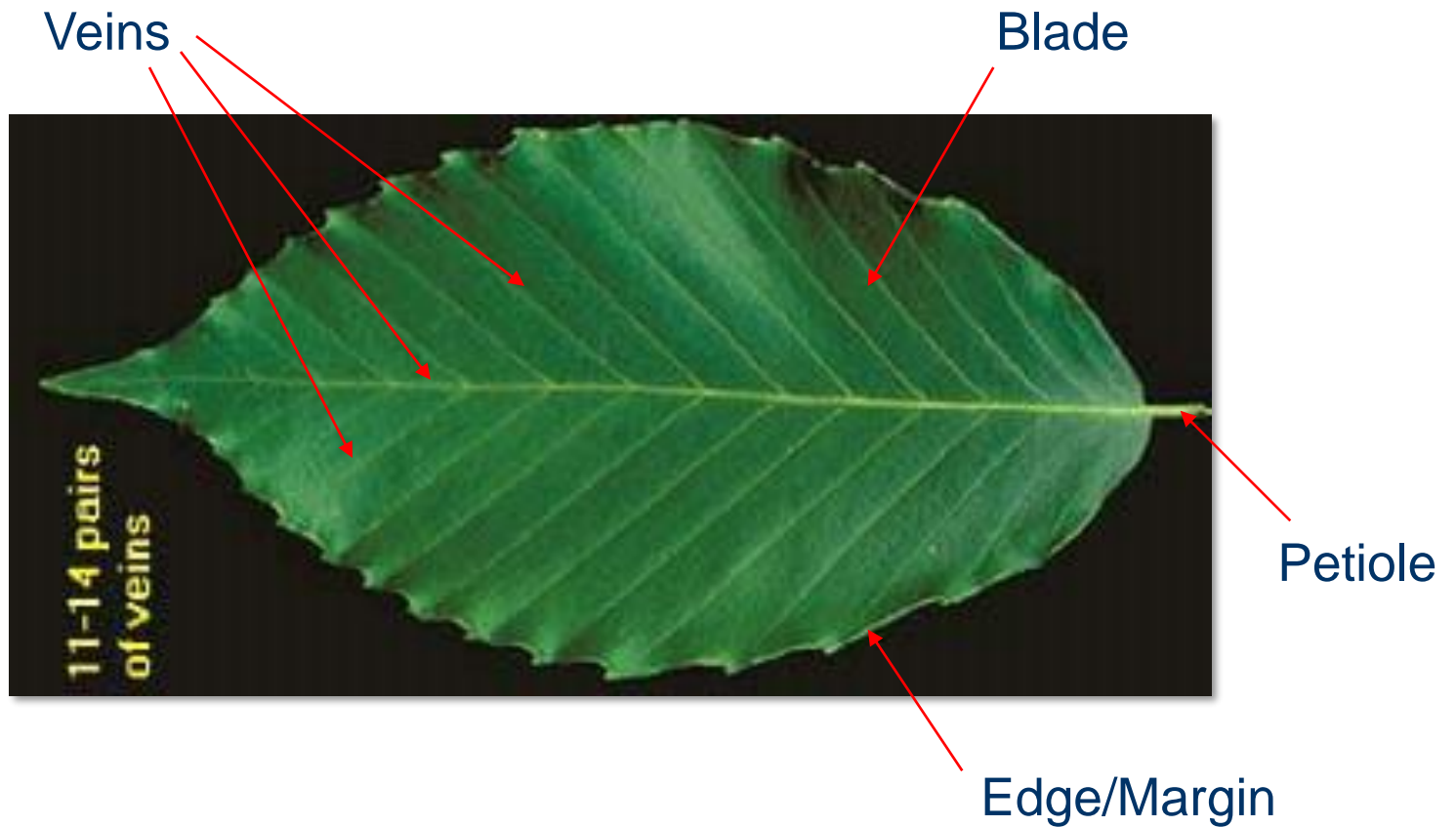
Tree Identification Features

- Leaves
- Bark
- Twigs
- Reproductive Parts
- Overall Form
- Growing Site

Leaf Characteristics

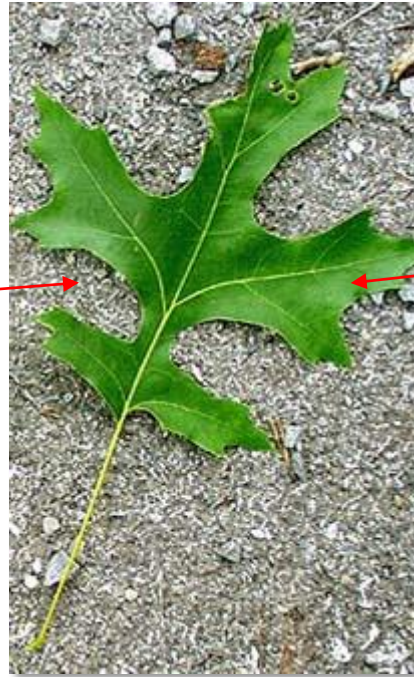
- Deciduous or evergreen?
- Arrangement on stem
- Simple or compound?
- Pinnate or palmate leaflets or veins
- Margins
- Base and tip features
- Special characteristics (smell, texture, stipules, glands, etc.)

Leaf Parts



Lobes

Sinus



Lobe

Edges or Margins



Serrated



Entire



Doubly
Serrated

Needles



Characteristics?



Characteristics?



Characteristics?



Characteristics?

