

# Cleaning And Disinfecting Your Facility

## Everyday Steps, Steps When Someone is Sick, and Considerations for Employers

### How to clean and disinfect

**Wear disposable gloves** to clean and disinfect.

#### Clean

- **Clean surfaces using soap and water.** Practice routine cleaning of frequently touched surfaces.



#### High touch surfaces include:

Tables, doorknobs, light switches, countertops, handles, desks, phones, keyboards, toilets, faucets, sinks, etc.



#### Disinfect

- Clean the area or item with soap and water or another detergent if it is dirty. Then, use a household disinfectant.
- **Recommend use of EPA-registered household disinfectant.** **Follow the instructions on the label** to ensure safe and effective use of the product.

Many products recommend:

- Keeping surface wet for a period of time (see product label).
- Precautions such as wearing gloves and making sure you have good ventilation during use of the product.

- **Diluted household bleach solutions may also be used** if appropriate for the surface. Check to ensure the product is not past its expiration date. Unexpired household bleach will be effective against coronaviruses when properly diluted.

**Follow manufacturer's instructions** for application and proper ventilation. Never mix household bleach with ammonia or any other cleanser.

**Leave solution** on the surface for **at least 1 minute**

Bleach solutions will be **effective** for disinfection **up to 24 hours**.

**To make a bleach solution**, mix:

- 5 tablespoons (1/3rd cup) bleach per gallon of water

OR

- 4 teaspoons bleach per quart of water

- **Alcohol solutions with at least 70% alcohol.**



### Soft surfaces

For soft surfaces such as **carpeted floor, rugs, and drapes**

- **Clean the surface using soap and water** or with cleaners appropriate for use on these surfaces.



[cdc.gov/coronavirus](https://www.cdc.gov/coronavirus)

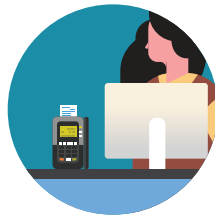
- **Launder items** (if possible) according to the manufacturer's instructions. Use the warmest appropriate water setting and dry items completely.

OR

- **Disinfect with an EPA-registered household disinfectant.** [These disinfectants](#) meet EPA's criteria for use against COVID-19.

## Electronics

- For electronics, such as **tablets, touch screens, keyboards, remote controls, and ATM machines**
- Consider putting a **wipeable** cover on electronics.
- **Follow manufacturer's instruction** for cleaning and disinfecting.
  - If no guidance, **use alcohol-based wipes or sprays containing at least 70% alcohol.** Dry surface thoroughly.



## Laundry

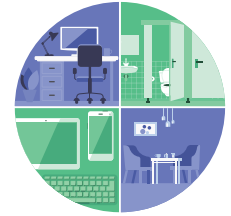
For clothing, towels, linens and other items

- Launder items according to the manufacturer's instructions. Use the **warmest appropriate water setting** and dry items completely.
- **Wear disposable gloves** when handling dirty laundry from a person who is sick.
- Dirty laundry from a person who is sick **can be washed with other people's items.**
- **Do not shake** dirty laundry.
- Clean and **disinfect clothes hampers** according to guidance above for surfaces.
- **Remove gloves,** and wash hands right away.



## Cleaning and disinfecting your building or facility if someone is sick

- **Close off areas** used by the person who is sick.
- **Open outside doors and windows** to increase air circulation in the area. **Wait 24 hours** before you clean or disinfect. If 24 hours is not feasible, wait as long as possible.
- Clean and disinfect **all areas used by the person who is sick**, such as offices, bathrooms, common areas, shared electronic equipment like tablets, touch screens, keyboards, remote controls, and ATM machines.
- If **more than 7 days** since the person who is sick visited or used the facility, additional cleaning and disinfection is not necessary.
  - Continue routine cleaning and disinfection.



## When cleaning

- **Wear disposable gloves and gowns for all tasks in the cleaning process, including handling trash.**
  - Additional personal protective equipment (PPE) might be required based on the cleaning/disinfectant products being used and whether there is a risk of splash.
  - Gloves and gowns should be removed carefully to avoid contamination of the wearer and the surrounding area.
- **Wash your hands often** with soap and water for 20 seconds.
  - Always wash immediately after removing gloves and after contact with a person who is sick.



- Hand sanitizer: If soap and water are not available and hands are not visibly dirty, an alcohol-based hand sanitizer that contains at least 60% alcohol may be used. However, if hands are visibly dirty, always wash hands with soap and water.

- **Additional key times to wash hands** include:

- After blowing one's nose, coughing, or sneezing.
- After using the restroom.
- Before eating or preparing food.
- After contact with animals or pets.
- Before and after providing routine care for another person who needs assistance (e.g., a child).

## Additional Considerations for Employers



- **Educate workers** performing cleaning, laundry, and trash pick-up to recognize the symptoms of COVID-19.
- Provide instructions **on what to do if they develop symptoms within 14 days** after their last possible exposure to the virus.
- Develop **policies for worker protection and provide training** to all cleaning staff on site prior to providing cleaning tasks.
  - Training should include when to use PPE, what PPE is necessary, how to properly don (put on), use, and doff (take off) PPE, and how to properly dispose of PPE.
- Ensure workers are **trained on the hazards of the cleaning chemicals** used in the workplace in accordance with OSHA's Hazard Communication standard ([29 CFR 1910.1200](#)).
- **Comply** with OSHA's standards on Bloodborne Pathogens ([29 CFR 1910.1030](#)), including proper disposal of regulated waste, and PPE ([29 CFR 1910.132](#)).

## For facilities that house people overnight:

- Follow CDC's guidance for [colleges and universities](#). Work with state and local health officials to determine the best way to isolate people who are sick and if temporary housing is needed.
- For guidance on cleaning and disinfecting the bedroom/bathroom for someone who is sick, review CDC's guidance on [disinfecting your home if someone is sick](#).

